



REARING
AHEAD
35
SINCE
YEARS



It's Time To Change



MEHTA TUBES LTD.

The Company With Mettle

MEXFLOW®

COMPANY PROFILE

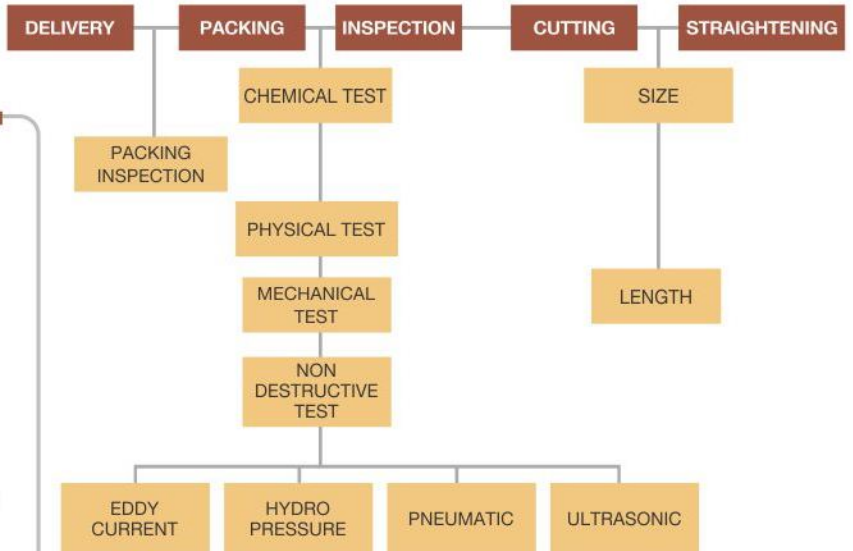
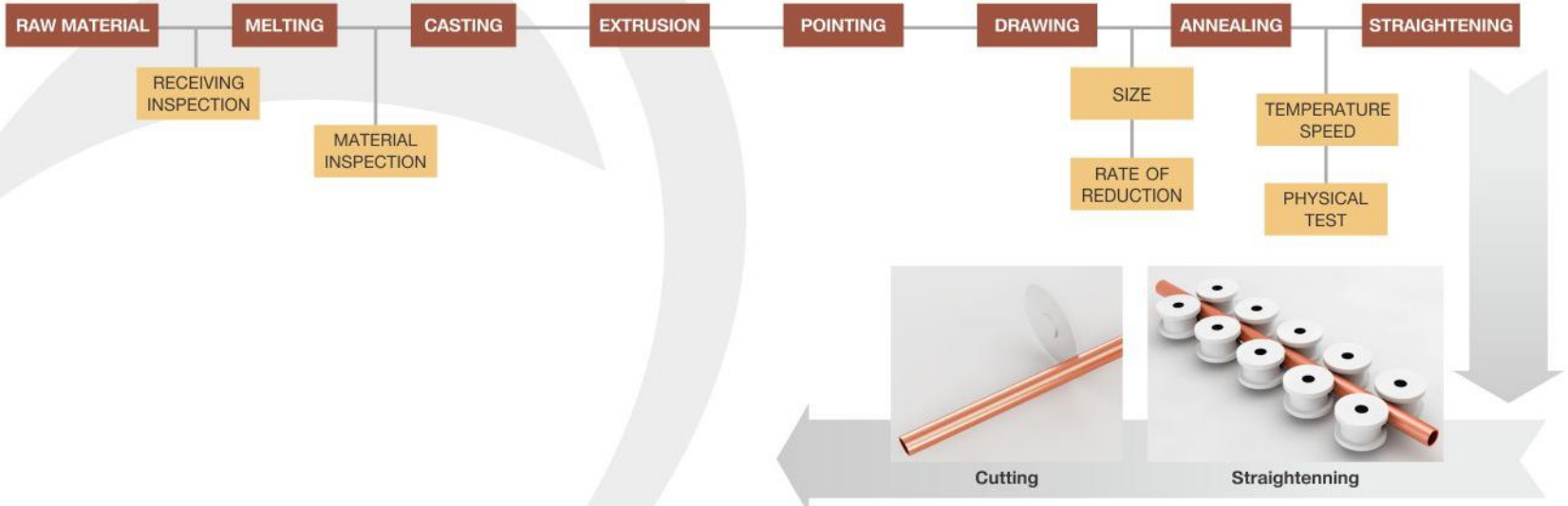


Since our inception in 1984, we have always evolved keeping in mind the requirement of the industry. Our constant endeavor to innovate & meet high standards of quality has retained our Global Leadership in Copper & Copper Alloy products with ISO 9001 certification & Star Trading House status.

We have transformed into our new shell & set up one of the largest state of the art manufacturing unit in India. With our changing look we are also changing the face of the Umbergaon, Gujarat contributing to the Rapid Development in this Beach Town.

We are Mehta Group The Radiant Star of the Indian Copper Industry.

MANUFACTURING PROCESS



PRODUCT SIZE

MANUFACTURING RANGE.

- Tubes:**
- Outside Diameter : 3.0mm (min) - 219mm (max)
 - Wall thickness : 0.3mm (min), Subject to OD
 - Length : 15mtr (max) in Straight
: 150mtr (max) in Coil
subject to OD & WT

- Strips / Bus Bars:**
- Width : 10mm - 250mm
 - Wall thickness : 1mm (min)
 - Length : Straight & Coil form

- Rods:**
- Extruded & Drawn : 3.0mm - 150mm

Temper : Annealed / Half Hard / Hard.

COPPER FLATS, STRIPS, TAPE, BUS BAR & RODS

Chemical Properties:

Cu UNS No.	Cu %	Ag %	O %
C11300	99.90 (min)	0.027	—
C11400	99.90 (min)	0.034	—
C11600	99.90 (min)	0.085	—
C10200	99.95 (min)	—	< 10 ppm
C10100	99.95 (min)	—	< 5 ppm
C11000	99.95 (min)	—	—
C12200	99.90 (min)	—	—



Products Application Areas : Transformers, Control Panels, Switchgear, Industrial Electrification, Earthing etc.

COPPER SECTIONS & PROFILES

Copper and copper alloy, Hollow Sections & Profiles are in high demand for electrical applications due to their high conductivity characteristics. Typical end uses are connectors, hollow core conductor, heating elements, coolant tube for electrical generators and EDM tube for cutting and drilling.

Copper & Brass hollow section are also manufactured for general engineering industries and fabrications.

Size Range : As Per Drawing & Scaling

Products Application Areas : Heating Element, Generators, Coolers, Electric applications etc.

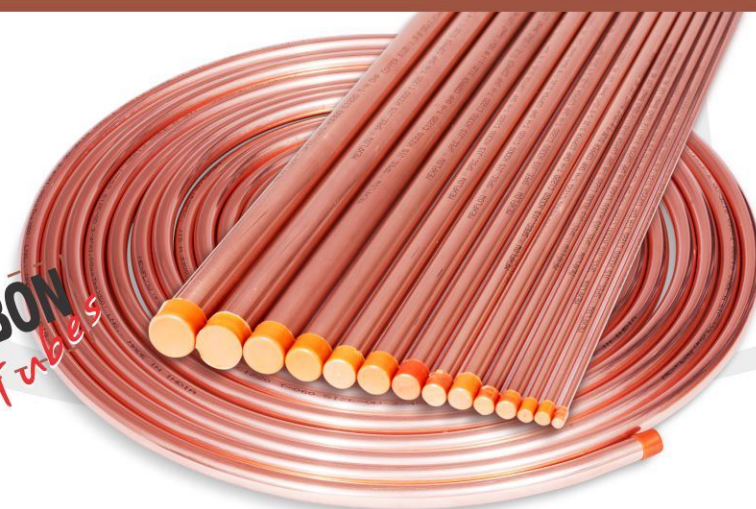


COPPER TUBES FOR HVAC & R / VRV & VRF

Standard	Symbol
ASTM B 68	C 12200
ASTM B 75	DHP C 12200
BS 2871 Part 2	C 106
BS 2871 Part 3	C 106
EN 12451	DHP
JIS H3300	C 1220
ASTM B 280	C 12200
ASTM B 111	C 12200

Products Application Areas:
Chiller, Evaporators, Coolers,
Refrigeration, Air Conditioning,
VRV & VRF.

**CARBON
FREE** Tubes



“MEXFLOW” COPPER TUBE FOR MEDICAL GAS PIPELINE SYSTEMS

TUBE SPECIFICATIONS

Seamless round copper tube for medical gases or vacuum, materials conforming to and manufactured as per BS:EN:13348:2001+ A1:2005 & ASTM B-819 Degreased Copper tube of this European & American standard are suitable for distributing the following medical gases intended to be used at operating pressure up to 2000 kpa and for system under vacuum:

MANDATORY INSPECTION REQUIREMENT:

Chemical Composition : Chemical Composition of copper tube shall conform to the following requirements. The analytical methods shall be carried out by Direct Emission Spectrometer.
Copper + Silver: min. 99.90% | Phosphorous min. 0.015%, max. 0.040%

This copper grade is designated either CU-DHP or CW 024A

- **CARBON CONTENT TEST ACCORDANCE WITH BS:EN:723: 1996.**
- **FREEDOM FROM DEFECTS TEST (NON DESTRUCTIVE TEST),**
EDDY CURRENT TEST IN ACCORDANCE WITH EN 1971.
- **DEGREASE OF COPPER TUBE & INDIVIDUALLY CAPPED AT BOTH ENDS.**
- **SIZE RANGE: 10mm O. D. to 159mm O. D.**

Products Application Areas : Hospitals, Clinics, Medical Collage, Laboratory etc.



“MEXFLOW” COPPER TUBES FOR WATER, GAS & SANITATIONS

- BS EN 1057: Seamless, round copper tubes for water and gas in sanitary and heating applications
- ASTM B 88: Seamless Copper Water tube
- ASTM B 306: Seamless Copper DWV Tubes

Copper Tubes are specified in the BS 2871 / EN 1057 in three wall thicknesses designated under Table X, Y & Z

CHEMICAL COMPOSITION: Copper Tubes are designated under alloy C 106 also called DHP (Deoxidised High Residual Phosphorized Grade).

The requirement is as follows :

Min. Copper including Silver : 99.9%, Phos.: 0.015% - 0.040%.



Products Application Areas : Plumbing, Solar, Sanitary, Natural Gas, LPG.



PVC COATED COPPER TUBES FOR INSTRUMENTATION

PVC COATED COPPER TUBES FOR GAS & WATER

In Coil Form :

Size – 6mm to 22mm

Length – 15mtrs. to 120 mtrs.

In Straight Form :

Size – 6mm to 42mm

Length – upto 6mtrs.

Available In BLACK, BLUE, WHITE, RED & YELLOW in Coil & Straight Length with ARAI Approval.

Specifications: ASTM / BS-EN & Other Similar Standards | Grades: ASTM: C12200 / BS: 106

Products Application Areas : Water, Heating, Gas, Air, Fluid & other Installation.

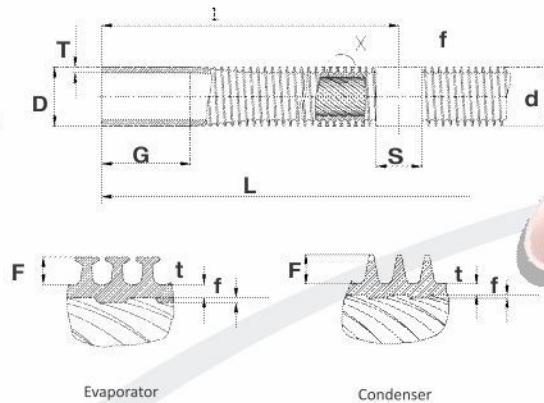


FINNED TUBES

INTEGRAL LOW FINNED TUBES

	OD	
Low Finned Tubes	19 / 26 / 42 / 56 FPI	
Outer & Inner Fin	OD	ID
Condenser	43 FPI	43 / 34 FPI
Evaporator	43 FPI	43 / 34 FPI
	56 FPI	43 / 34 FPI
Alloy	Copper/Cupro Nickel/Brasses	
Tube OD Range	15.88mm - 25.4mm	

Products
Application Areas:
 Boiler & Heat Exchanger,
 Heaters, Air Coolers,
 Generators etc.



D - Outer Diameter of Plain End
d - Outer Diameter of Finned Section
T - Wall Thickness of Plain End
F - Fin Height (OD)
G - Plain End Length
t - Root Thickness
f - Fin Depth
S - Skip Distance
L - Total Length of Fin Tube

CUPRO NICKEL TUBES

CONDENSER & HEAT EXCHANGERS



Products Application Areas:
 Chillers, Heat Exchangers & Condensers,
 Power Plants, Refineries,
 Desalination Plants, Ship Building
 & Ship Repairs, Defence etc.

Alloy	Standard	Symbol
90/10 CuNi	ASTM B 111	C70600
	BS 2871 Part 3	CN 102
	EN 12451	CuNi 10 Fe 1Mn
	NFA51 102	CuNi 10 Fe 1Mn
	JIS H 3300	C 7060
	EEMUA Pub 144 1987	C 7060X
	NES 779 Part 3	90/10 CuNi
70/30 CuNi	ASTM B 111	C 71500
	BS 2871 part 3	CN 107
	EN 12451	CuNi 30 Fe 1 Mn
	NFA 51 102	CuNi 30 Fe 1 Mn
	JIS H 3300	C 7150

MARINE & DEFENSE



Alloy	Standard	Symbol
95/5 CuNi	ASTM B 111	C70400
80/20 CuNi	ASTM B 111	C71000
Cunifer	ASTM B 111	C71640

COPPER & COPPER ALLOY RODS / BILLETS

RWMA ALLOY

ROUND		
Cast & Turned	Extruded	Extruded & Drawn
100 MM TO 500 MM	> 80 MM TO 100 MM	3 MM TO 80 MM
100 MM TO 500 MM	> 80 MM TO 100 MM	15 MM TO 80 MM

COPPER	
HEXAGONAL	
Extruded	Extruded & Drawn
> 75 MM TO 100 MM	10 MM TO 75 MM
> 75 MM TO 100 MM	20 MM TO 75 MM

SQUARE	
Extruded	Extruded & Drawn
> 75 MM TO 100 MM	10 MM TO 75 MM
> 75 MM TO 100 MM	20 MM TO 75 MM

100 MM TO 500 MM	> 80 MM TO 100 MM	15 MM TO 80 MM
100 MM TO 500 MM	> 80 MM TO 100 MM	25 MM TO 80 MM

COPPER NICKELS	
> 75 MM TO 100 MM	20 MM TO 75 MM
> 75 MM TO 100 MM	20 MM TO 75 MM

> 75 MM TO 100 MM	20 MM TO 75 MM
> 75 MM TO 100 MM	20 MM TO 75 MM

100 MM TO 500 MM	> 80 MM TO 100 MM	25 MM TO 80 MM
1100 MM TO 500 MM	> 80 MM TO 100 MM	25 MM TO 80 MM

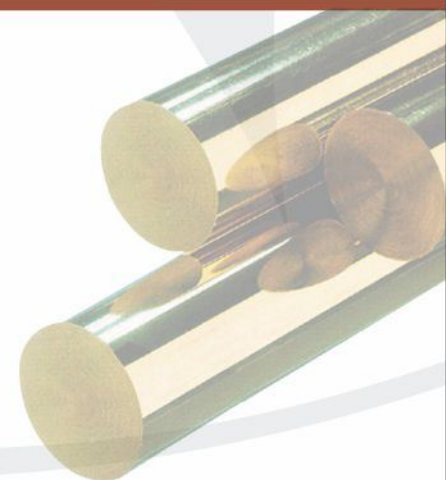
BRASSES	
> 75 MM TO 100 MM	20 MM TO 75 MM
> 75 MM TO 100 MM	20 MM TO 75 MM

> 75 MM TO 100 MM	20 MM TO 75 MM
> 75 MM TO 100 MM	20 MM TO 75 MM

100 MM TO 500 MM	> 80 MM TO 100 MM	25 MM TO 80 MM
------------------	-------------------	----------------

NICKEL & SILVER	
> 75 MM TO 100 MM	20 MM TO 75 MM

> 75 MM TO 100 MM	20 MM TO 75 MM
-------------------	----------------



COPPER & COPPER ALLOY RODS / BILLETS

COPPER

S.N.	ALLOYS	ASTM	BS	EN
ALLOYS NAME AND SPECIFICATIONS				
1	Arsenical Copper	C14200	C107	-
2	Tellurium Copper 1	C14500	C109	CW118C
3	Sulphur Copper	C14700	C111	CW114C
4	Cadmium Copper	C16200	C108	-
5	Chromium Copper	C18200	CC 101	CW105C
6	Chromium Copper Nickel Silicon	C18000		CW111C

BRASSES

S.N.	ALLOYS	ASTM	BS	EN
ALLOYS NAME AND SPECIFICATIONS				
1	Cartridge Brass	C26000	-	-
2	Basic Brass	C27200	-	-
3	Naval Brass	C46200 C46400	BS 2874	-
4	High Tensile Brass	C36000	BS 2874	-
5	Free Machining Brass	C36000	BS 2874	-
6	Arsenical Brass	C36000		-

COPPER NICKELS

S.N.	ALLOYS	ASTM	BS	EN
ALLOYS NAME AND SPECIFICATIONS				
1	90/10 Cu Ni	C70600	Cn102	CW352W
2	70/30 Cu Ni	C71500	Cn107	CW353H
NICKEL & SILVER				
S.N.	ALLOYS	ASTM	BS	EN
ALLOYS NAME AND SPECIFICATIONS				
1	Nickel Silver Free Machining Rod	-	-	-



BRONZE ALLOY

ALUMINIUM BRONZE

ROUND		
Cast & Rounded	Extruded	Extruded & Drawn
80 MM TO 500 MM	60 MM TO 80 MM	15 MM TO 60 MM
100 MM TO 500 MM	> 80 MM TO 100 MM	10 MM TO 80 MM
80 MM TO 500 MM	-	-
100 MM TO 500 MM	> 80 MM TO 100 MM	10 MM TO 80 MM
101 MM TO 500 MM	> 80 MM TO 100 MM	10 MM TO 80 MM
80 MM TO 500 MM	-	-

HEXAGONAL

Extruded	Extruded & Drawn
> 60 MM TO 80 MM	20 MM TO 60 MM
> 75 MM TO 100 MM	15 MM TO 75 MM
-	-

SILICON BRONZE

Extruded	Extruded & Drawn
> 75 MM TO 100 MM	15 MM TO 75 MM
-	-

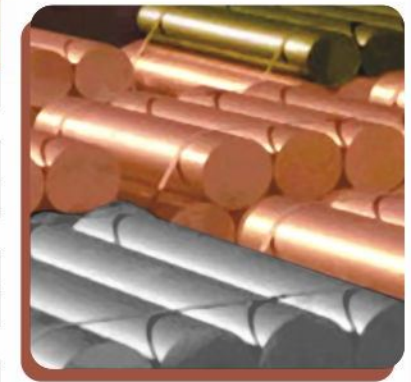
MANGANESE BRONZE

Extruded	Extruded & Drawn
> 75 MM TO 100 MM	15 MM TO 75 MM
> 75 MM TO 100 MM	16 MM TO 75 MM

PHOSPHOR BRONZE

Extruded	Extruded & Drawn
-	-

SQUARE	
Extruded	Extruded & Drawn
-	-
> 75 MM TO 100 MM	15 MM TO 75 MM
-	-
> 75 MM TO 100 MM	15 MM TO 75 MM
> 75 MM TO 100 MM	16 MM TO 75 MM
-	-



ALUMINIUM BRONZE

S.N.	ALLOYS	ASTM	BS	EN
1	Al. Bronze 1	C62300	CA103	CW305G
2	Al. Bronze 2	C63000	CA104	CW307G
1	Al. Si. Bronze	C64200	CA107	CW302G

SILICON BRONZE

S.N.	ALLOYS	ASTM
1	Low Si. Bronze	C65100
2	High Si. Bronze	C65500
3	High Si. Bronze	C65600
4	High Si. Bronze	C66100
5	CUN12SI	C64700

MANGANESE BRONZE

S.N.	ALLOYS	ASTM
1	Manganese Bronze B	C67400
2	Manganese Bronze A	C67500

PHOSPHOR BRONZE

S.N.	ALLOYS	ASTM
1	Phosphor Bronze A	C51000
2	Phosphor Bronze C	C52100
3	Phosphor Bronze D	C52400



Size Range : 4" DIA - 18" DIA in Weight upto 900Kgs

Product Application : Automobile, Welding, Aerospace, Electronic & Telecommunication.

BRASS TUBES

CONDENSER & HEAT EXCHANGER

Alloy	Standard	Symbol
Admiralty Brass	ASTM B 111	C 44300
	BS 2871 Part 3	CZ -111
	EN 12451	CuZn28 Sn 1 As
	NFA 51 102	CuZn29 Sn 1
	JIS H 3300	C 4430

Alloy	Standard	Symbol
Aluminium Brass	ASTM B 111	C 98700
	BS 2871 Part 3	CZ -110
	EN 12451	CuZn20 AL2As
	NFA 51 102	CuZn22 AL2
	JIS H - 3300	C 6870

Products Application Areas: Heat Exchange, Refineries Power Plants, Desalination Plants, Ship Building & Ship Repairs, Condensers, Ferrules, Distillers.

Alloy	Standard	Symbol
Aluminium Bronze	ASTM B 111	C 60800
	EN 12451	CuAL5As
		CW200G

Products Application Areas: Heat Exchange in Chemical Industry, Desalination Plants, Refineries Ship Building & Ship Repairs.

FURNITURE / SANITARY

Alloy	Standard	Symbol
63/37 Brass	ASTM B 135	C 27200
	JIS H 3300	C 2700
	DIN 17671	CuZn37
85/15	ASTM B 135	C2300

Products Application Areas: General Engineering, Ammunition, Bore Hole Tubes, Architectural Grill.

DEFENSE

Alloy	Standard	Symbol
70/30 Brass	ASTM B 135	C 26000
	BS 2871 Part 3	CZ -126
	EN 12451	CuZn30As
	NFA 51 102	CuZn30
	JIS H 3300	C 2600
AS 1572	26130	

Products Application Areas: Sugar Industry, Plumbing, Furniture, General Engineering, Ammunition, Bore Hole Tubes.

Alloy	Standard	Symbol
Naval Brass	ASTM B 21	C 46400
	BS 2874	CZ - 112
	DIN 17665	CuZn405n

Products Application Areas : Marine, Defense, Bushes.

Alloy	Standard	Symbol
90/10 Brass	ASTM B 111	C 22000
	EN 12451	CuZn10

Products Application Areas: Defence, Bushes, Driving Bands.

HEX RANGE OF ELECTRICAL ACCESSORIES

When the customers require items of electrical accessories other than those available in our product range, we quote for these special items, modifications of existing range or simply low usage items based on the state-of-art facilities available with our group company under brand name "HEX", complete product catalogue can be send upon request.



Product Application Area : Electrical, switchgear
www.hexworldwide.com

OUR PRESTIGIOUS CLIENTS



PRODUCTS & PLANT APPROVALS



Office: 915-916, Plaza Panchshil, 9th floor, 55, Hughes Road, Mumbai - 400 007 INDIA.
 Tel: +91 22 4340 4040. Fax: 4340 4050. E-mail: sales@mehta-group.com Website: www.mehtatubes.com.

Unit 1: Char Rasta, Nanapondha, Taluka Kaprada Dist: Valsad, Gujarat, Pin - 396126, India.
 Unit 2: Survey No. 46/1, Ganga Devi Road, Palgam, Umbergaon Dist: Valsad, Gujarat, Pin - 396170, India.
 Daman Unit: Plot No. 100/101, Panchal Udyog Nagar, Bhimpore, Daman (U.T.), Pin - 396120, India.

Mehta Group - **The Radiant Star Of Indian Copper Industry**

EXPORT HOUSE



An ISO 9001:2015 Company